

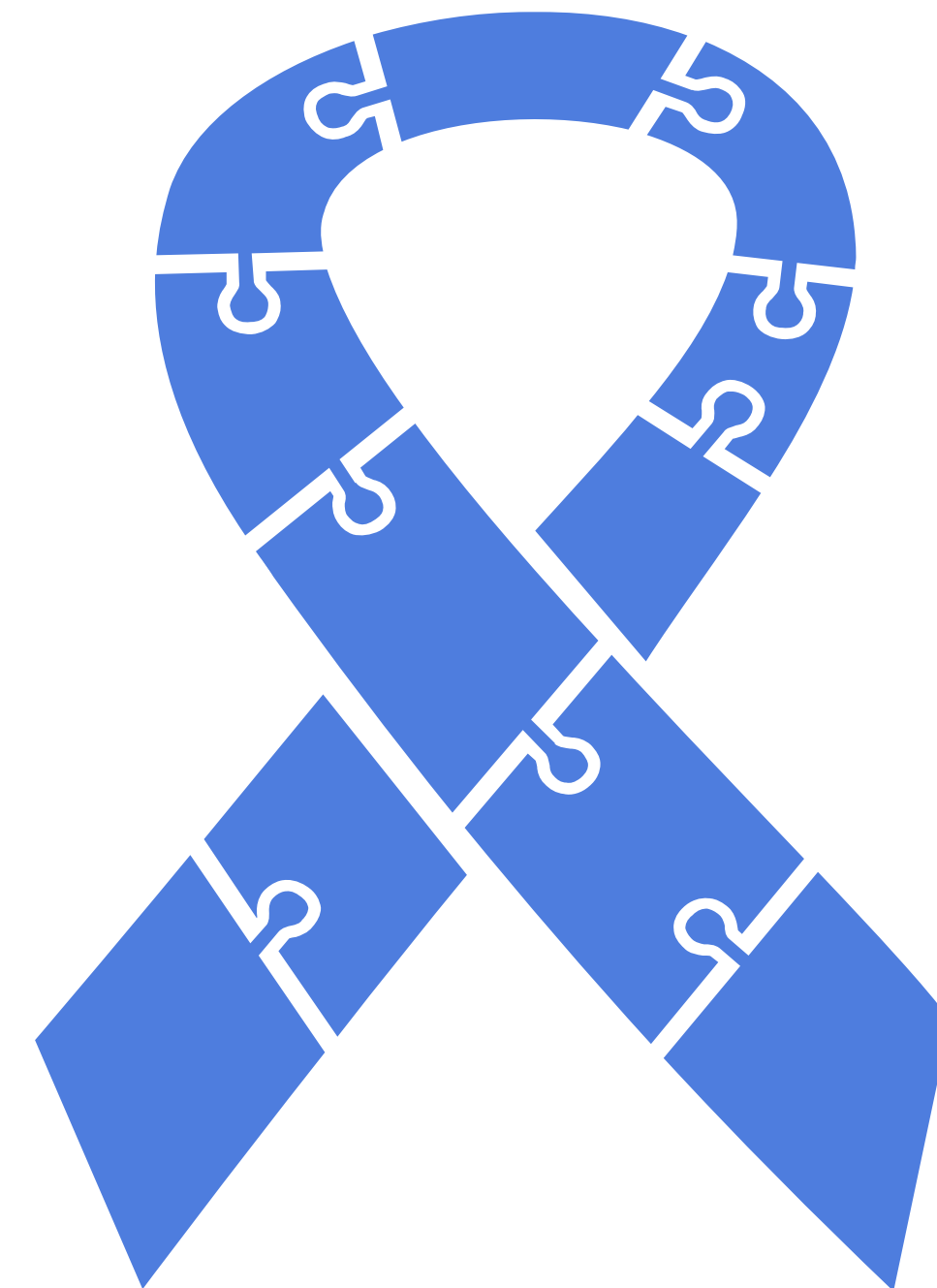
Youly Surgical

TSPA - Tissue Sparing Prostate Ablation

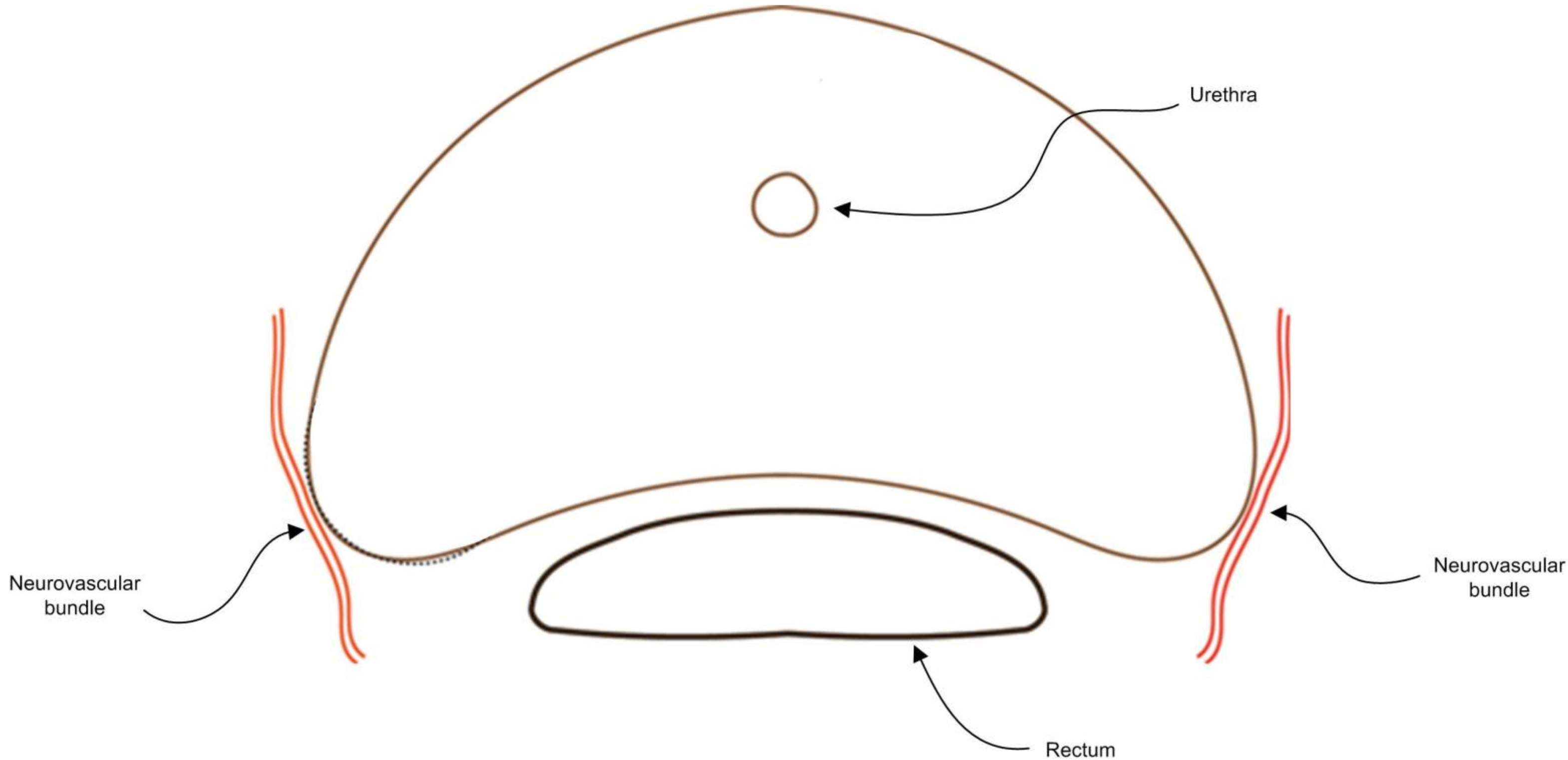
Patients Presentation

Challenges in Prostate Cancer treatment

- ✓ Most common treatments are Robotic Surgery and Radiotherapy.
- ✓ Those aggressive treatments are frequently associated with adverse side-effects, such as Erectile Dysfunction and Urinary Incontinence.



Challenges in Prostate Cancer treatment



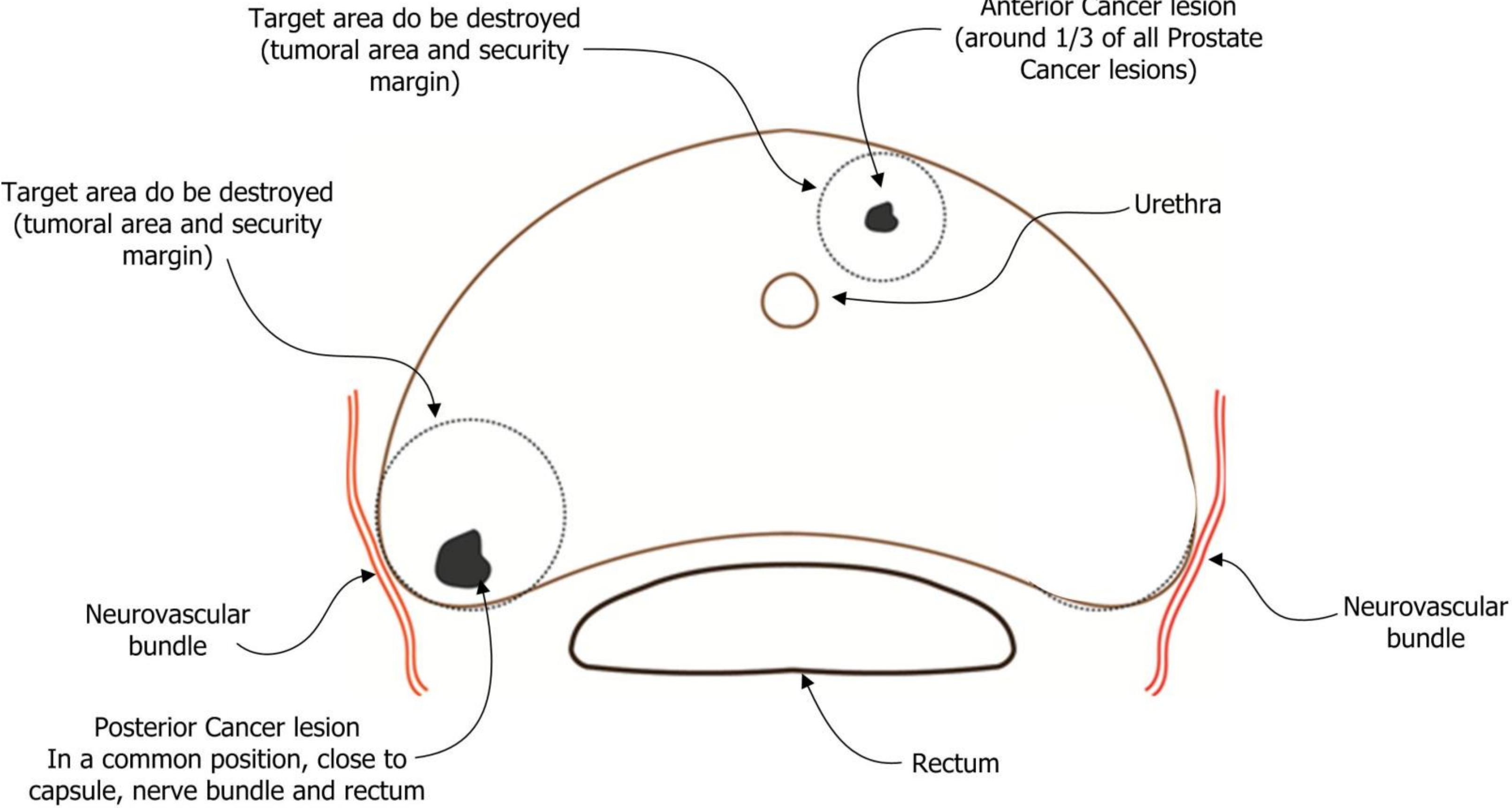
Cross section of a Prostate, showing sensitive surrounding tissues

What is Focal or Localized Therapy ?

- ✓ Focal Therapy or Ablation is a less aggressive treatment option, where only areas within the Prostate having cancer cells are treated.
- ✓ The main goal of Focal Therapy is eradicating tumors within the Prostate and avoiding damage to sensitive surrounding tissues, thus preserving patients quality of life.
- ✓ Focal Therapy can be a good option to younger patients, patients with less aggressive types of cancer and to those unable or unwilling to undergo surgery.



What is Focal or Localized Therapy ?



Cross section of a Prostate, surrounding tissues and key objectives in Prostate Focal Therapy

What is TSPA?

TSPA – Tissue Sparing Prostate Ablation

- ✓ TSPA's Encage device generates a Faraday Cage effect, preventing damage to surrounding tissues.
- ✓ Encage's effectiveness has been demonstrated in clinical studies done in prestigious institutions, such as New York University (NYU), University College London (UCL), Moffitt Cancer Center and Long Island Jewish (LIJ).
- ✓ TSPA has been developed over more than 12 years in a \$ 15 Million program.
- ✓ TSPA is available in the US on a Concierge basis in a limited number of centers.

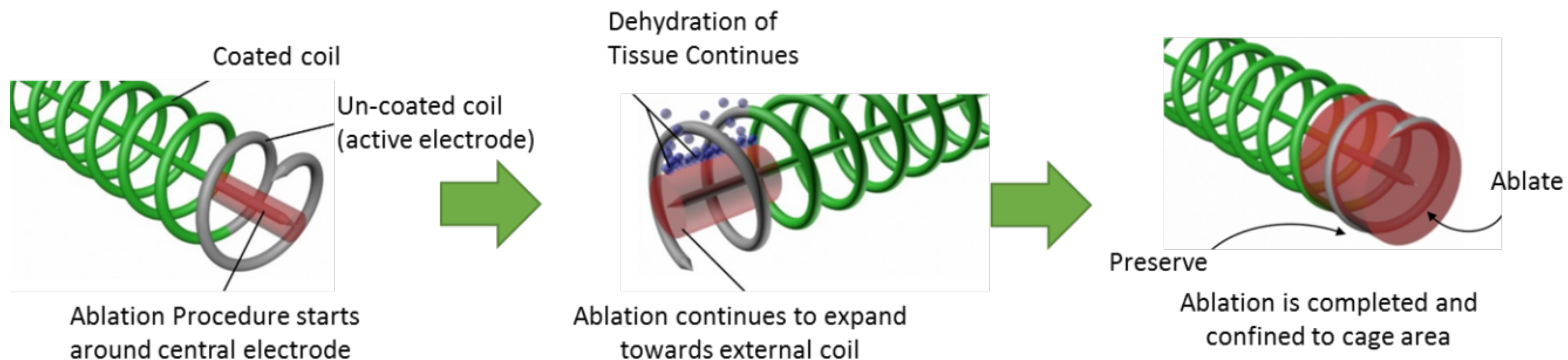


Faraday cage effect

How the technology works



- Encage RF bipolar device has an inner electrode and an external coiled electrode.
- The heat effect starts in the inner electrode and propagates towards the external coil, until the tissue within the limits of the cage is totally destroyed.
- The outer coil generates a Faraday Cage effect preventing destruction to spread beyond the limits of the cage.



Tissue Ablation process in Encage device

TSPA's main advantages

- ✓ TSPA is a short outpatient procedure. No incisions and no hospital stay.
- ✓ Clinical studies demonstrated excellent cancer control and virtually no adverse side-effects.
- ✓ Recovery is fast and patients can retrieve normal life in a few days. No need to keep a catheter after the procedure in most cases.



TSPA is not for every patient. Only your Doctor can define if you are eligible.